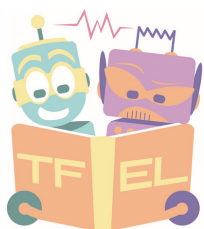


FIELD RESEARCH SCHOLARS PROGRAM



Transforming the Field Education Landscape

A year-long, program for social work graduate students (MSW/PhD) and postdoctoral scholars who are passionate about research in field education!



MENTORSHIP

Connect with social work field education researchers and scholars to learn new skills and ways of knowing, while also developing professional networks with fellow researchers.



SEMINARS

Monthly seminars will be organized for Field Research Scholars and guests to present on their research to discuss implications for social work field education.



WORKSHOPS/WORKING GROUPS

Working groups provide members with a safe space to express challenges, ask questions, and engage in constructive conversations with peers. Workshops will include topics such as preparing articles for publication and grant writing.

OBJECTIVES

- Foster a network of mentorship relationships and peer collaboration
- Transform social work graduates into highly qualified personnel
- Create professional development opportunities for emerging social work researchers in field education

APPLY NOW

Apply by submitting the following to **tfelproject@gmail.com**:

- Resume and cover letter
- A 100-200 word statement including your name, address, level of education, institution, topic/area of interest and why you are interested in this program

***The Field Research Scholars Program will run virtually due to COVID 19**

Field Research Scholars will be provided with a \$500 honorarium