

Fund for Social Policy Education and Practice
Close Out Meeting

April 26, 2017

National Association of Social Work Conference Center
750 First Street NE #700
Washington DC 20002

The Fund for Social Policy Education and Practice

We believe that the social work profession could greatly improve the effectiveness of policy and service efforts designed to ameliorate persistent poverty and growing inequality, if all social workers were better prepared to understand and act on the policy implications of their work.

The Fund for Social Policy Education and Practice (The Fund for Social Policy) works in partnership with key social work and allied organizations to assess and act on opportunities for changes in undergraduate and graduate curriculum, field practice, research and career path development so that social work students and practitioners become more cognizant of, and responsive to, the policy context and climate of their work.

Since 2015, The Fund for Social Policy, in consultation with an advisory group, has identified and supported strategic social work education projects which,

- Stimulate field-wide interest in the expansion of opportunities for social workers to engage in policy development, advocacy and human service planning that improve conditions or opportunities for individuals, groups and communities, and
- Strengthen the manner in which social workers (regardless of their area of practice, specialization or organizational setting) are prepared to more effectively raise, analyze and address issues of poverty and inequality.

The Fund for Social Policy staff also engages in thought leadership – speaking and writing about the issue of social worker engagement in policy, and representing the Fund for Social Policy at meetings of relevant organizations.

Strategic projects supported by The Fund for Social Policy provide resources for social work students, faculty and administrators, and practitioners - they include,

The Coalition for Policy Education & Practice in Social Work (at CSWE)
National Field Education Project (at CSWE)
National Policy Fellows Program (at NSWMM)
Professional Development (at ISP)
Policy Teaching Institute (at ISP)
On-Line Policy Certificate (at ISP)
Voter Education in Curricula & Field Education (at UCONN)
In Our Own Backyard (at BMP)
Policy Boot Camp (at UI)
Policy Relevance for Deans and Directors (at NADD)
Voter Education Website (at ISP, CRISP)
Grand Challenges for Social Work (AASWSW, GWSTL/Brown School of Social Work)
A Spotlight on Policy Practice Activities (at CRISP)
Macro Practice Curricular Guide (CSWE, SC/ACOSA)

Fund for Social Policy Education and Practice Staff



Patricia A. White
Executive Director



Holly Delany Cole
Project Manager

Fund for Social Policy Education and Practice

Assess and act on opportunities for changes in undergraduate and graduate curriculum, field practice, research and career path development that support the ability of social workers, across method, to be more responsive to the social policy context of their work.

Objectives

1

To help improve the education and training of social work students so that they are more cognizant of, and responsive to, the policy context and climate of their work.

2

Enhance the skills of faculty, administrators, researchers and practitioners to include policy, via faculty development institutes, curriculum development, hiring/tenure practices, and best practice exchanges.

3

To help social work profession set an agenda for social policy through faculty, student and practitioner led activities that affect policy that advances equity and social justice.

Partners

American Academy of Social Work and Social Welfare (AASWSW) Grand Challenges Executive Committee

Association of Baccalaureate Social Work Program Directors (BPD)

Building Movement Project

Center for Social Development, George Warren Brown School of Social Work, Washington University

Congressional Research Institute on Social Work and Policy (CRISP)

Council on Social Work Education (CSWE)

Influencing Social Policy (ISP)

Lois and Samuel Silberman Grant Fund

Nancy A Humphreys Institute for Political Social Work, University of Connecticut School of Social Work

National Association of Deans and Directors of Schools of Social Work (NADD)

National Association of Social Workers (NASW)

The New York Community Trust

Network for Social Work Management (NSWM)

Special Commission to Advance Macro Practice in Social Work of the Association for Community Organization and Social Administration (ACOSA)

Race, Ethnicity and Poverty Network (REAP Centers)

Society for Social Work and Research (SSWR)

Urban Institute (UI)

Social Work Schools Participating in Projects

Field Education

Boston College*
 Bryn Mawr College
 Clarke University
 Colorado State University*
 Concord University
 Coppin State University
 Eastern Michigan University
 Eastern Washington University
 Evangel University
 Howard University*
 Humboldt State University
 Hunter College, Silberman*
 Indiana University*
 Michigan State University
 North Carolina State University*
 Rutgers University*
 Simmons College*
 St. Catherine University - University of St. Thomas *
 Texas A&M University - Kingsville*
 Touro College
 University of Alabama - Birmingham
 University of Houston*
 University of Missouri at St. Louis
 University of Nevada, Reno*
 University of North Carolina at Chapel Hill*
 University of Oklahoma
 University of Pittsburgh
 University of Portland*
 University of Southern California*
 University of Wisconsin, Milwaukee

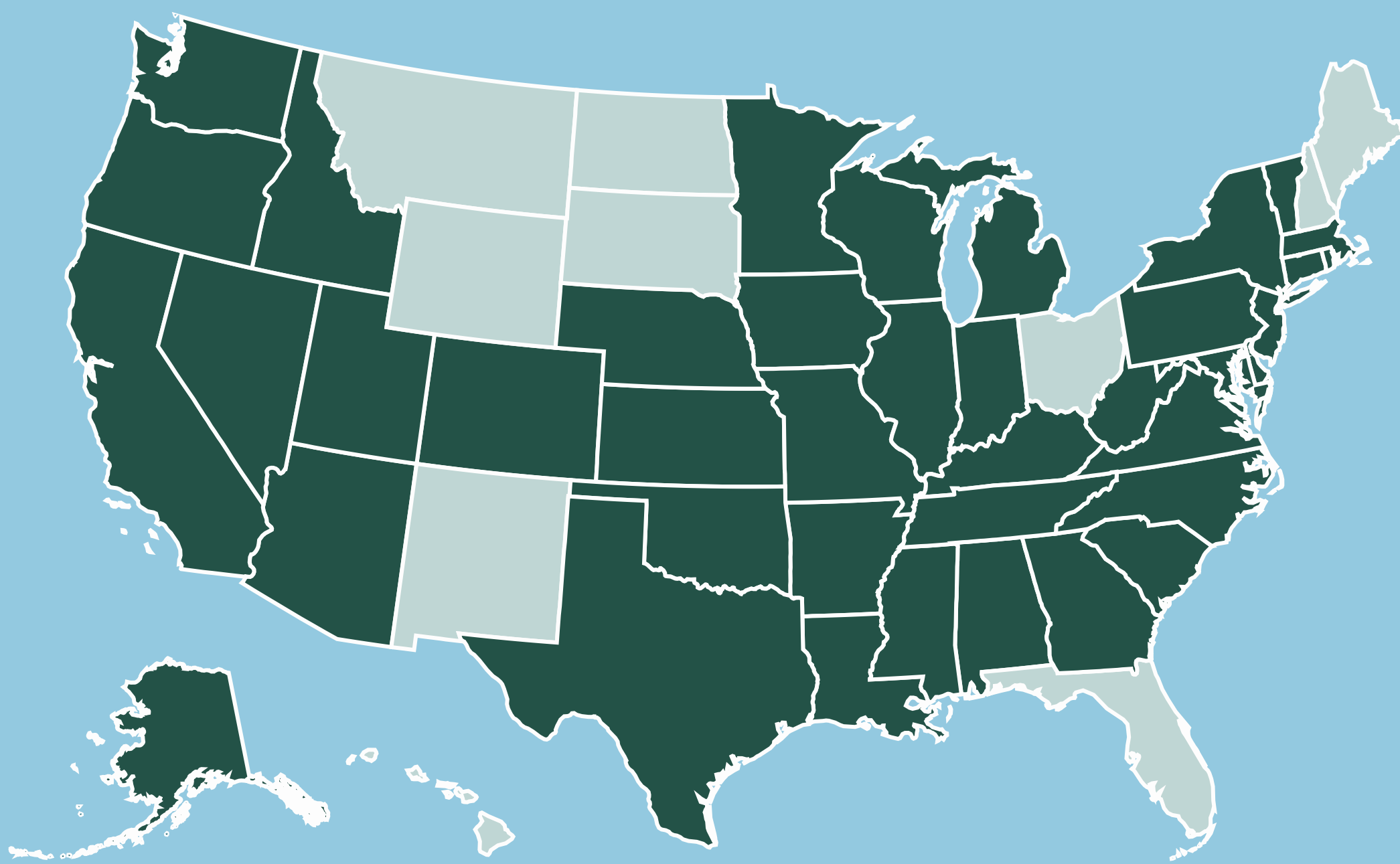
Policy Boot Camp

Brigham Young University
 California State University, Easy Bay
 Colorado State University
 Howard University*
 Hunter College, Silberman*
 Indiana University*
 Louisiana State University
 North Carolina State University
 Rhode Island State University
 Southern Illinois University, Carbondale
 Temple University
 University of Albany
 University of California, Berkeley
 University of Denver
 University of Houston*
 University of Kansas
 University of Maryland, Baltimore
 University of Missouri, Columbia
 University of Nevada, Reno*
 University of North Carolina, Chapel Hill*
 University of St. Catherine - University of St. Thomas*
 University of Southern California*
 University of Texas at Arlington
 University of Texas at Austin
 Washington University in St. Louis

Teaching Institute

Abilene Christian University
 Arizona State University
 Belhaven University
 Belmont University
 Boston University
 California State University, Bakerfield
 California State University, San Marcos
 Campbellsville University
 Castleton University
 Centenary University
 Central Michigan University
 Hunter College, Silberman*
 Huntington University
 Indiana University - South Bend
 James Madison University
 Lehman College - CUNY
 Lewis-Clark State College
 Luther College
 Montevallo University
 Pepperdine University
 Purdue University Northwest
 Sacred Heart University
 Saginaw Valley State University
 Seton Hill University
 Shepherd University
 Simmons College*
 Southeast Missouri State Univ.
 Southern Baptist University
 Stony Brook University
 Texas A&M University - Central Texas
 Texas Christian University
 University of Alaska
 University of Arkansas at Monticello
 University of Georgia
 University of Nebraska, Kearney
 University of Nevada at Reno*
 University of North Texas
 University of Portland*
 University of South Carolina
 University of Southern Mississippi
 University of the Virgin Islands
 Valparaiso University
 Viterbo University
 Western Michigan University
 Xavier University

Location of Schools



Darker states indicate where schools are located

*Participation in two or more FSPEP-funded projects.

Policy Practice in Field Education Initiative

Funded Partner: Council on Social Work Education

Provides grants (\$5K-\$20K) to schools of social work to expand policy practice in field education and/or community engagement projects.

Review Committee Organizations



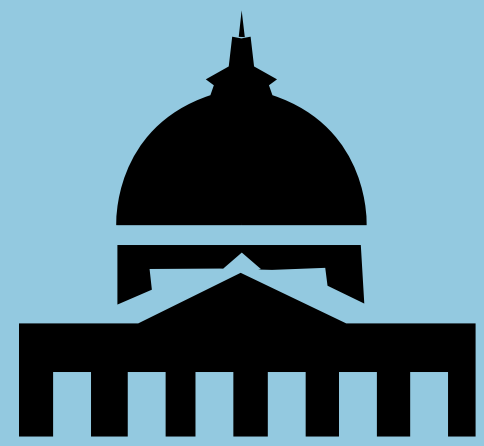
- FSPEP
- Council on Field Education
- Congressional Research Institute for Social Work and Policy (CRISP)
- North American Network of Field Educators and Directors (NANFED)
- Special Commission on Macro Practice
- Baccalaureate Program Directors (BPD)

Funding



Year 1: \$160,000 plus matching funds from Casey Family Programs
Year 2: \$160,000

Outcomes



More policy content is reflected across field education



More social work students, across all degrees, have policy experience.



Continuation of initiative anticipated for up to 2 years

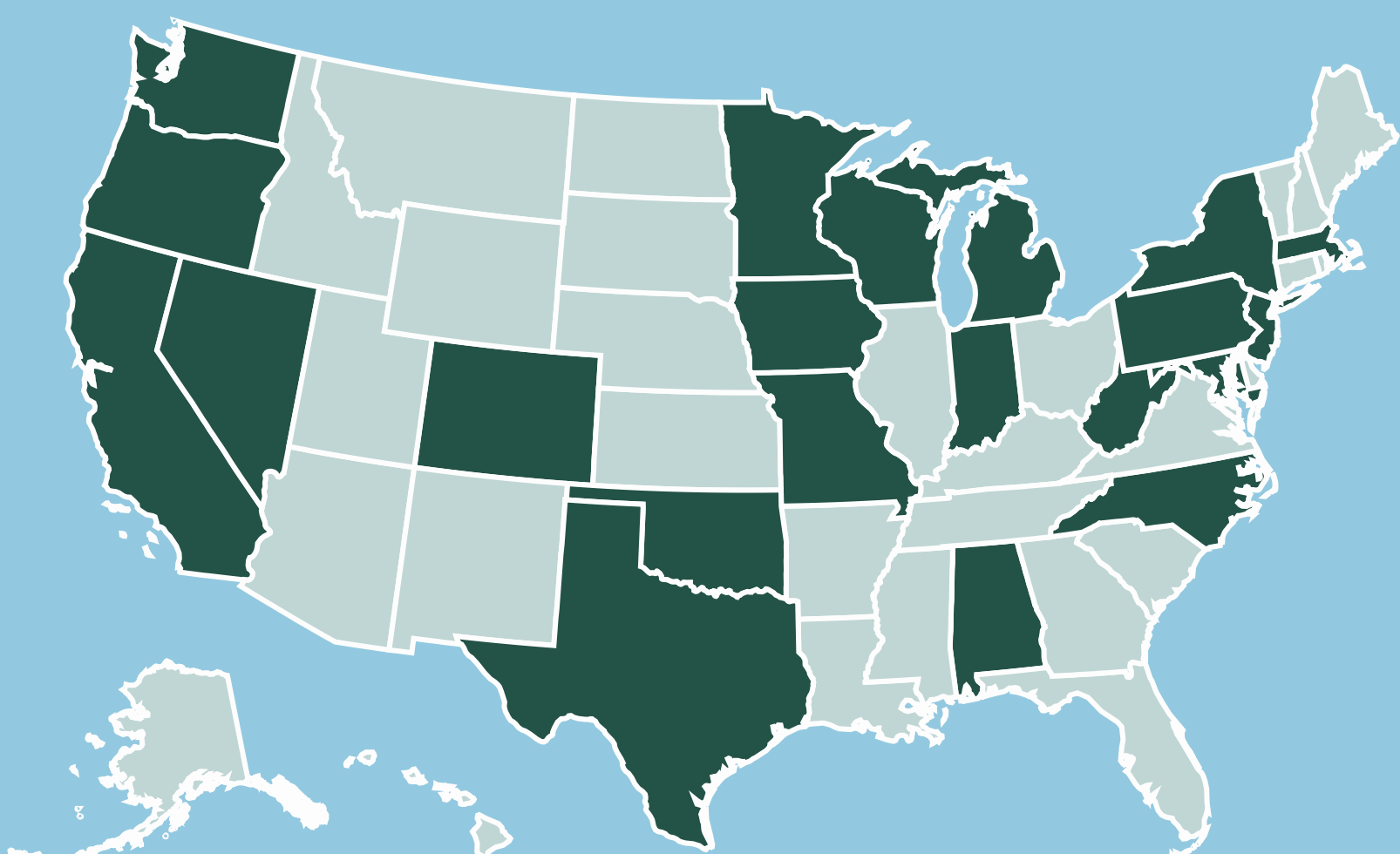
FSPEP Objective 1

To help improve the education and training of social work students so that they are more cognizant of, and responsive to, the policy context and climate of their work.

Grantee Information

36 grants awarded to 32 schools in 22 states

- 2 Historically Black Colleges and Universities (HBCUs)
- 1 Hispanic Serving Institution (HSI)
- 3 rural schools



Darker states indicate where schools are located

Cycle 1

82 applications received
23 applications funded
\$220,780 awarded in funding

Cycle 2

102 applications received
13 applications funded
\$145,241.55 awarded in funding

Grant Types

- 4 - Field Placement Planning*
- 12 - Field Placement Implementation
- 6 - Community Engagement Planning*
- 14 - Community Engagement Implementation

* Planning grants were only offered in cycle 1

Voter Education Curriculum and Field Education

Funded Partner: University of Connecticut, Nancy A. Humphreys Institute for Political Social Work

Pilot model to embed voter education into required curricula and field education for all BSW and MSW students. Provide technical assistance to faculty and field supervisors at interested schools.

**FSPEP
Objective 1**

To help improve the education and training of social work students so that they are more cognizant of, and responsive to, the policy context and climate of their work.

Collaborative Partners



University of Nevada, Reno

Funding



Year 1: \$29,924

Year 2: \$10,862

Why does voter education matter to social work?

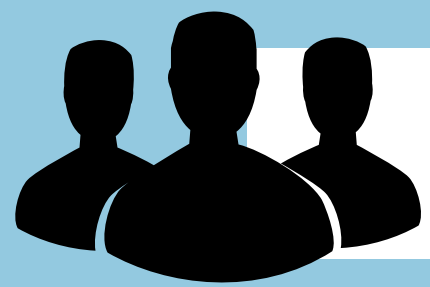
Social workers and organizations support voting as an indicator of individual and community health

Integrate voter engagement into service delivery and advocacy

Voter turnout increases

Better leaders and more informed political decisions are made

Elements of a successful model



Community Partnerships

Institutional Buy-In



Assignment and Curriculum Placement

Materials and Training



Training assignment topics

Benefits of voting to individuals and communities

Voting as a human and civil right and the impact of felony disenfranchisement

Policy implications of low voter turnout

The meaning of nonpartisan voter engagement and the difference from partisan politics

Methods of integration nonpartisan voter registration, education, and outreach into service delivery

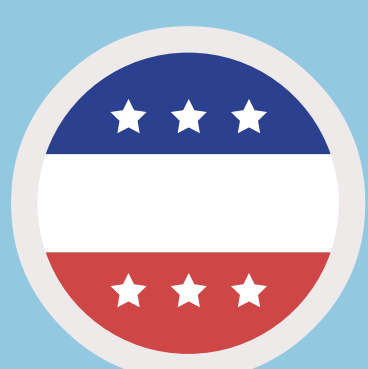
Results



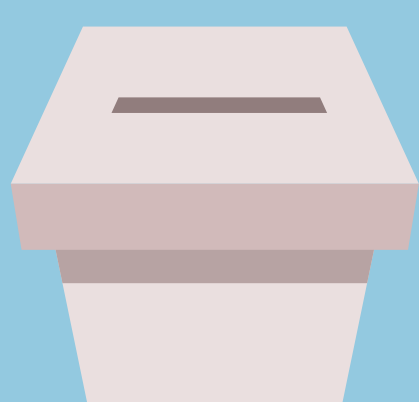
Trained at least 15 schools and organizations



Expanding the model with six schools and in discussions with more



Changes in attitudes towards the importance of voting to social work practice



More than 95% of students plan to continue encouraging voting in the future

Draw Attention to Policy Practice: Student Day on the Hill

Funded Partner: Congressional Research Institute on Social Work and Policy

Generate awareness about policy activities by supporting policy activities of social work students

Collaborative Partners



- NASW
- CSWE
- Special Commission

Funding



Year 1: \$2,000
Year 2: \$7,000

FSPEP
Objective 1

To help improve the education and training of social work students so that they are more cognizant of, and responsive to, the policy context and climate of their work.

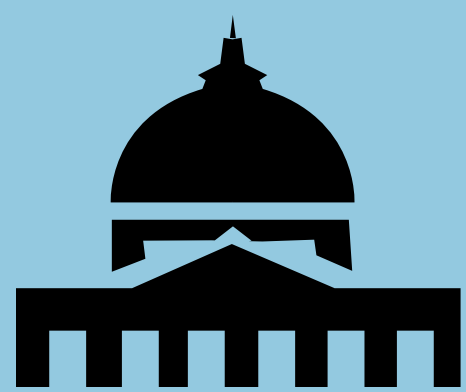
March 9, 2017

Gallaudet University
Washington, DC

Attendance

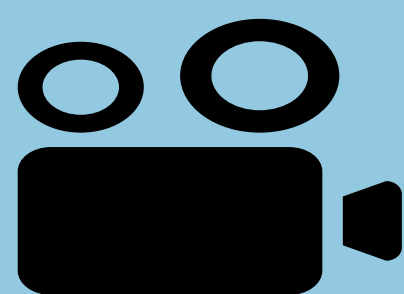
Student Events

YVOTE

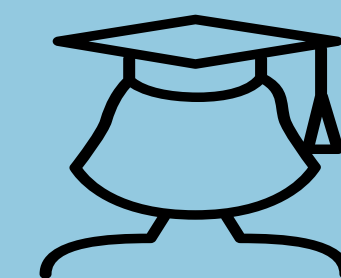


Students scheduled meetings with their Congressional representatives to advocate on legislation

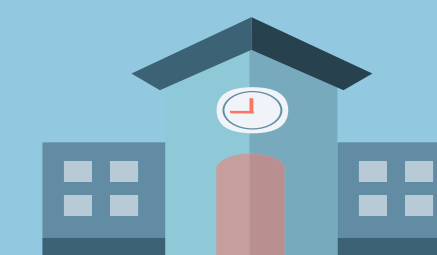
Advocacy



A video documentary comprised of students detailing why voting is important

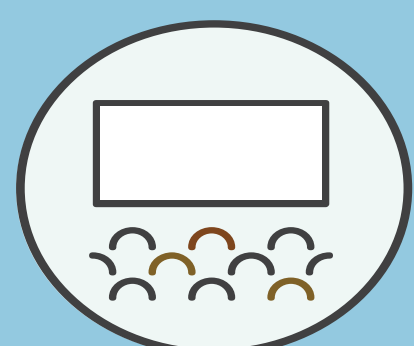


More than 400 students

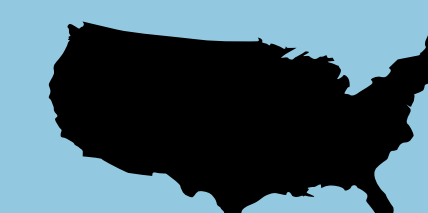


From about 45 schools and programs

Seminar



Special seminar for social workers interested in running for elected office



Located in 17 different states

See also: Celebrate Policy Activities

Professional Development

Funded Partner: Influencing Social Policy

To increase visibility, capacity, and membership of organization of social work policy faculty.

Infrastructure Support

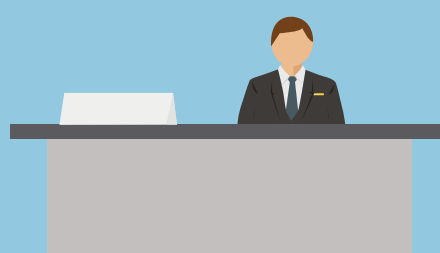
Funding



Year 1: \$10,000

Year 2: \$6,000 through Coalition

Support



Hired part-time administrative personnel to assist with membership outreach, website maintenance, and conference logistics

FSPEP Objective 2

Enhance the skills of faculty, administrators, researchers and practitioners to include policy, via faculty development institutes, curriculum development, hiring/tenure practices, and best practice exchanges.

ISP Website

Website Development



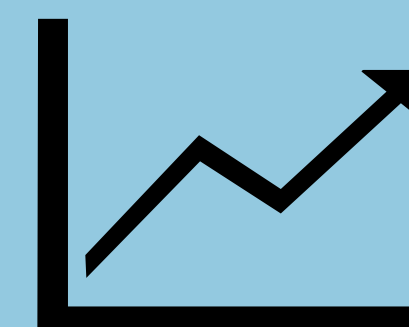
Publicized faculty award for policy teaching/learning and increased membership. Shared resources for teaching policy across degrees

Awards



Increased ISP contest award amounts

Result



Paid memberships have more than tripled

influencingsocialpolicy.org/

Professional Development

Funded Partner: Influencing Social Policy

To engage students and practitioners in policy activities

Voter Education Website

A "one stop shop" to better facilitate faculty access to curricular resources for voter empowerment campaigns/education; and to engage students in social media "Why Vote" activities and voter registration efforts

votingissocialwork.org/

Funding



Year 1: \$10,000

FSPEP
Objective 2

Enhance the skills of faculty, administrators, researchers and practitioners to include policy, via faculty development institutes, curriculum development, hiring/tenure practices, and best practice exchanges.

Collaborative Partners



- Nancy Humphreys Institute for Political Social Work, University of Connecticut

- CRISP

In Our Own Backyard

Workshop to help nonprofits in NYC understand and apply skills/strategies that lead to policy and system changes in service areas that are barriers to clients' health and welfare.

Collaborative Partners



- Building Movement Project (fund administration: Third Sector New England)

- Fordham University Graduate School of Social Service

Funding



\$9,000

Attendance

25

attendees anticipated for April 27, 2017 workshop

5

of the 25 attendees will be invited to a continuing education session held by NASW NYC

Professional Development: On-line Policy Practice Certificate

Funded Partner: Influencing Social Policy

To help faculty provide BSW and MSW students policy content beyond what is taught in the classroom

Collaborative Partners



- Team of faculty from leading schools of social work
- Rick Hoefer, University of Texas at Arlington
- Miguel Ferguson, OfCourse!

Funding

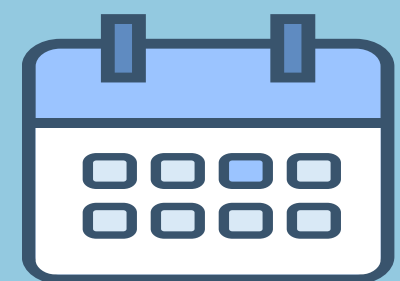


- Year 1: \$10,000
- Year 2: \$6,000 through Coalition

FSPEP
Objective 2

Enhance the skills of faculty, administrators, researchers and practitioners to include policy, via faculty development institutes, curriculum development, hiring/tenure practices, and best practice exchanges.

Launch



Launched in Fall 2016

Location



Housed on the CSWE Learning Academy website

Certificate Course

Participants will learn

The history of social welfare in the U.S. and current trends in poverty and inequality

What advocacy is and how social workers can get involved

Strategies for effective advocacy, including education, persuasion and negotiation

Modules

13 modules contain video and animation to help social work students and faculty advance their understanding of poverty and income equality

Introduction
Social welfare in the US
Poverty in the US
Inequality in the US
What is advocacy?
Getting involved in Advocacy Practice
Advocacy as Policy Practice
Evaluating Advocacy Efforts
Education
Advocacy Tactics
Persuasion
Negotiation
Conclusion

Outcome



Certificate awarded upon completion of quiz



58 people completed the certificate to date

Professional Development: Policy Teaching Institute

Funded Partner: Influencing Social Policy

Design and delivery of ongoing Teaching Policy Institute at annual meetings of social work faculty at BSW and MSW program levels (i.e. APM, BPD, Policy 2.0)

Funding



Year 2: \$16,000

Conferences

Faculty Development Institute at CSWE Annual Program Meeting on November 3, 2016 in Atlanta, GA

Workshop at the Association of Baccalaureate Social Work Program Director (BPD) Conference on March 5, 2017 in New Orleans, LA

Presenters

Miguel Ferguson*
OfCourse!

Suzanne Pritzker
University of Houston

Sunny Harris Rome
George Mason University

* Did not present at the BPD Conference

FSPEP
Objective 2

Enhance the skills of faculty, administrators, researchers and practitioners to include policy, via faculty development institutes, curriculum development, hiring/tenure practices, and best practice exchanges.

Creative, Hands-On Approaches to Teaching Policy Content

Replication of Policy Teaching Institute given at the Policy 2.0 Conference in 2016

Attendance

25

Participants
at APM

31

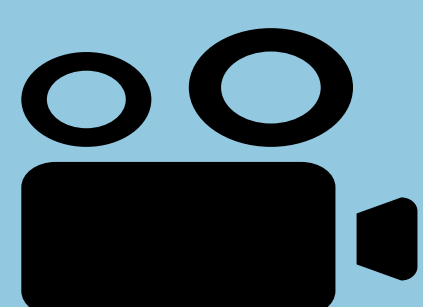
Participants at
BPD

Training provided

Hands on activities related to current policies and programs, and advocacy

Tools and ideas they can implement in policy courses

Tools and ideas they can implement in other courses throughout the curriculum



Created a short video to improve future attendance

Policy Boot Camp

Funded Partner: Urban Institute

Designed and delivered training in translating research into policy for tenured and non-tenured social work researchers.

Collaborative Partners



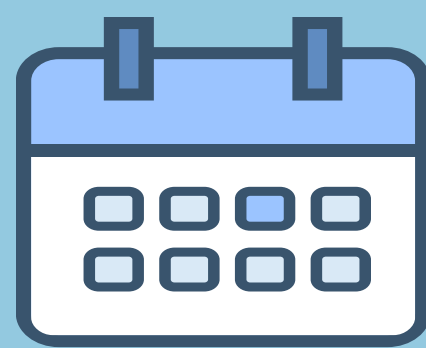
- Society for Social Work and Research

Funding



Year 2: \$44,500

Training



1 1/2 day training in Washington DC on March 15-16, 2017

Attendance

30

Researchers were selected from faculty of schools of social work across the country

FSPEP Objective 2

Enhance the skills of faculty, administrators, researchers and practitioners to include policy, via faculty development institutes, curriculum development, hiring/tenure practices, and best practice exchanges.

Training provided by

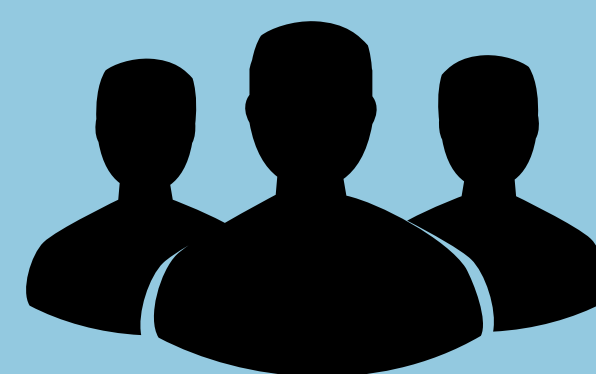
Congressional fellows
Urban Institute Senior Staff
Journalists
Leadership of a DC social services agency

Attendees engaged in the following activities



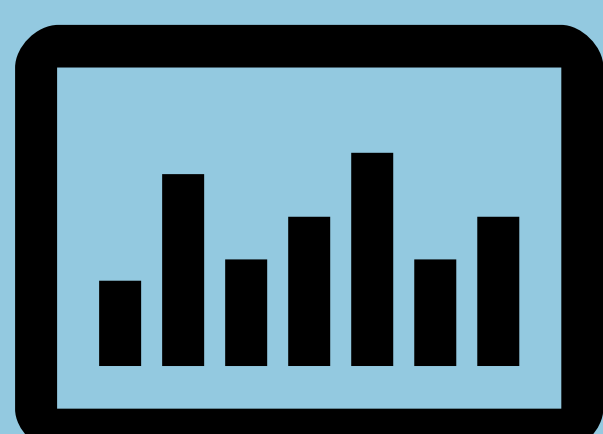
Role Playing

Scenarios on what and what not to do when communicating with policymakers



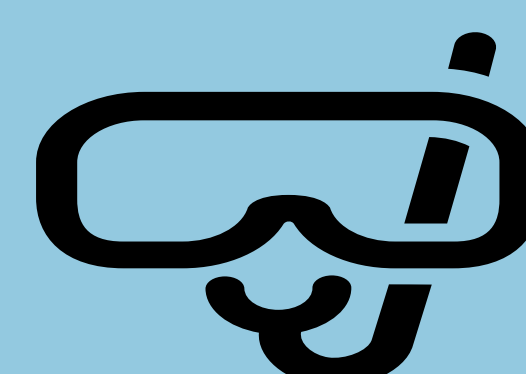
Small Groups

Small group conversations with journalists on what to convey to them about research



Data Visualization

Presentations on the use of data visualizations and social media to disseminate their research



Deep Dive

Deep dive sessions that allowed for in-depth discussions about translating individuals' research and hands-on practice

Policy Fellows Program

Funded Partner: Network for Social Work Management

To provide coaching and visibility for policy-related projects carried out by social work professionals in management positions that directly affect the individuals, families, and communities they serve

Collaborative Partners



Council on Social Work Education

Funding



Year 1: \$10,000

Year 2: \$15,000 through Coalition

2015 Fellows and Topic Area

Alissa West Cahill – Nursing Home Reform*
 Danielle Perry – Minority Youth**
 Charlotte Gossett – Immigration*
 Maggie Gustafson – Contraception Policy*
 Jennifer Jones – Criminal Justice Reform
 Lindsey Bishop – Immigration*
 Diane Pagen – TANF Policy
 Ingrid Estrada – Health Care Policy*
 Tisa McGhee – Utilizing PhotoVoice for Policy Change**
 Brad Palmertree – Child Welfare*

2016 Fellows and Topic Area

Mileka Ackie – Corporate Social Responsibility (CSR)
 Amy Coombs – Professional Licensing and Regulatory Issues
 Allison Landy Trevino-Hartman – Young Fathers
 Joseph Silva – Program, Policy Design
 Daniel Domaguin – Healthcare/Behavioral Health
 Nidia Hernandez – Community-Based Services
 Emily Higgs – Children & Youth Wellbeing
 Alissa Cahill – Program Development, Stakeholder Engagement***
 Tisa McGhee – Community Policy Development**
 Lindsey Bishop – Immigration***

Mentors

Sam Mistrano, Murali Nair, Bruce Friedman, Joan Zlotnik, Erin Bortel, Jennifer Magnabosco, Jorge Lambrinos, Richard Hoefer, John Tropman, Joan Davitt, Lauri Goldkind, Kathy Briar-Lawson

* Policy Fellow Presenters at NSWAM Conference, June 2016. It is anticipated that all 2016-17 fellows will present at June 2017 conference.

** Policy Fellow Presenters at NASW-National Conference, June 2016

***Continuing Fellows, 2nd Year (2015-2017)

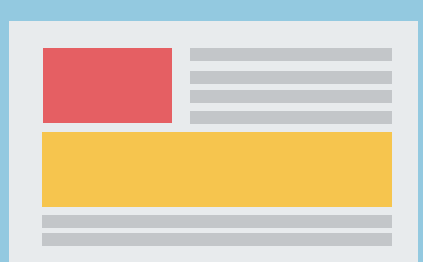
Program Elements



Mentoring by policy experts



Submission of abstract for NSWAM conference



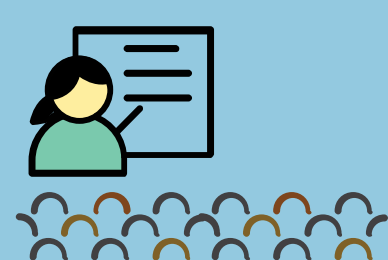
Poster presentations at the NSWAM conference



Journal submission



Op-ed submission



Panel presentations by second year fellows at the NSWAM conference

FSPEP Objective 2

Enhance the skills of faculty, administrators, researchers and practitioners to include policy, via faculty development institutes, curriculum development, hiring/tenure practices, and best practice exchanges.

Strengthen Policy Relevance for Deans and Directors of Schools of Social Work

Funded Partner: National Association of Deans and Directors

Carry out activities in two NADD venues to promote policy development and practice within social work education (curriculum, hiring/tenure)

Funding



Year 2: \$17,000

Leadership Academy for deans and directors

Leadership Academy of Deans and Directors of Schools of Social Work (LADD)

Cohort of 12 deans and directors attended

Seminars on various policies relevant to social work*

* A third seminar will occur in June 2017

Conference



Spring 2017 conference focused on policy practice and policy research

3

General sessions dedicated to the policy initiative

Outcomes



Established a standing committee on policy practice within NADD

FSPEP Objective 2

Enhance the skills of faculty, administrators, researchers and practitioners to include policy, via faculty development institutes, curriculum development, hiring/tenure practices, and best practice exchanges.

Macro Practice Curricular Guide

To develop macro practice curricular guide with focus on all 3 areas of specialization-policy practice, community practice, and management/administration.

Collaborative Partners



- CSWE
- NSWM
- Special Commission

Funding



\$4,000



Completion of guide anticipated in 2018

Steering Committee



Steering Committee has begun working on guide

Taskforce

61

Faculty selected to participate in the national task force that will help develop the guide

Grand Challenges

Funded Partner: Washington University, Center for Social Development, Brown School of Social Work (AASWSW, SSWR)

Support dissemination/presentation of policy recommendations to policymakers, the media, and the public

Funding



\$15,000

Collaborative Partners/Sponsors



- American Academy of Social Work & Social Welfare
- Washington University in St. Louis, Office of the Provost
- Brookings Institution
- Society for Social Work and Research
- Fund for Social Policy Education and Practice
- Federal Reserve Bank of St. Louis
- Washington University in St. Louis, George Warren Brown School of Social Work
- University of Southern California, School of Social Work
- University of Washington, School of Social Work
- University of Chicago, School of Social Service Administration
- University of Texas at Austin, School of Social Work
- University of Maryland, School of Social Work
- University of Denver, Graduate School of Social Work
- University of Michigan, School of Social Work
- Boston University, School of Social Work
- University of Pennsylvania, School of Social Policy & Practice

FSPEP
Objective 2

Enhance the skills of faculty, administrators, researchers and practitioners to include policy, via faculty development institutes, curriculum development, hiring/tenure practices, and best practice exchanges.

Outcomes

Successful inclusion of Grand Challenges for Social Work policy issues and questions in 2016 presidential election debate held at Washington University

Engagement of U.S. Sen. Claire McCaskill (D-Missouri) who provided a video to welcome conference participants

More than 50 policy recommendations proposed to address the 12 Grand Challenges

Numerous conference materials and products developed and released

Conference spurs development of national networks across all 12 Grand Challenge areas.

Op Ed on "12 questions for the presidential debate" published in the St. Louis Post Dispatch

Conference Highlights

First conference to raise awareness of key policy issues pre 2016 presidential election

Speakers included policy experts ranging from US Department of Health & Human Services to former economic advisor to Vice President Joe Biden to senior fellow at the Center on Budget and Policy Priorities.

Consolidation of policy action statements into a white paper for submission to the new administration

Over 250 registrants from across the USA ; with broad representation of policymakers, scholars, social work and allied professionals, students, philanthropy, the media, and the public.

Coalition For Policy Education and Practice in Social Work

Funded Partner: Coalition (CSWE: staff and coordinate its activities, including fiscal management)

Leadership of national social work organizations working together to make policy advocacy and policy practice a greater focus in social work education and professional development.

Funding



Year 1: \$160,000

Year 2: \$122,284

Coalition Member Organizations



- BPD
- CRISP
- CSWE
- FSPEP
- Grand Challenges
- ISP
- NADD
- NASW
- NSWM
- The Special Commission
- REAP Centers
- SSWR
- Student Representative

FSPEP Objective 3

To help social work profession set an agenda for social policy through faculty, student and practitioner led activities that affect policy that advances equity and social justice.

Coalition Activities/Actions

Coalition Scholar



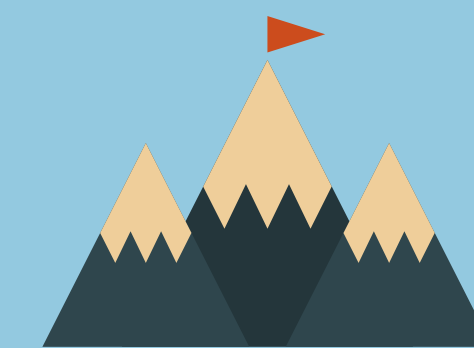
Policy scholar selected to design and administer studies on policy education and social workers engagement in policy practice

Curriculum Resources



A workgroup was assembled to identify and fill gaps in social work curriculum.

Policy Summit



Brings together students, faculty, and practitioners for a convening on policy education and practice

Webinar Series



Developed 2 webinars for practicing social workers to incorporate policy into direct service. Webinars will have CEUs.

Clearinghouse



House resources, syllabi, and classroom activities for faculty, students, and practitioners

Celebrate policy activities



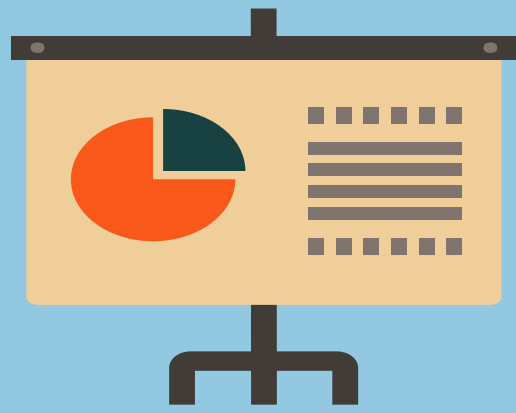
The creation of a national e-newsletter informing the public of coalition and related policy events and a website to share information about student engagement in policy efforts

For additional coalition related activities see these sections:

- Professional Development
- Policy Certificate
- Policy Fellows
- Policy Teaching Institute
- Student Day on the Hill

Thought Leadership

To engage social work profession and allied groups in dialogue about social policy and bring attention to the work of FSPEP and its partners



Over 12 presentations have been made at national and local conferences/forums

Conferences in 2016

ISP/Policy 2.0

NASW-National

NASW-NYC

Association of Black Foundation Executives

Network for Social Work Management

National Association of Deans and Directors of Schools of Social Work

R.E.A.P./Race, Ethnicity and Poverty Network

Grand Challenges

North American Network of Field Educators and Directors/NY Area Field Directors Consortium

Conferences in 2017

ISP/Policy 2.0

NASW-NYC

National Association of Deans and Directors of Social Work

Network for Social Work Management

Policy Summit

FSPEP Advisory Committee

Dr. Katharine V. Byers
Associate Professor Emerita and Chair, Influencing State Policy, Indiana
University School of Social Work

Dr. Darla Spence Coffey
President and Chief Executive Officer, Council on Social Work Education

Dr. Larry E. Davis
Dean & Donald M. Henderson Professor, Director, Center on Race and Social
Problems, School of Social Work, University of Pittsburgh

Dr. Nancy A. Humphreys
Professor of Policy Practice Emerita and Founder, Nancy A. Humphreys Institute
for Political Social Work, University of Connecticut School of Social Work

Dr. Kilolo Kijakazi
Institute Fellow, Urban Institute

Dr. Angelo McClain
Chief Executive Officer, National Association of Social Workers (NASW)

Dr. Jacqueline B. Mondros
Dean and Assistant Vice President for the Social Determinants of Health at Stony
Brook University & Chair, National Association of Deans and Directors

Lorie A. Slutsky
President, The New York Community Trust

Mildred Thompson
Senior Director, PolicyLink, Director, PolicyLink Center for Health Equity and
Place (retired)

Dr. Edwina Uehara
Professor and Ballmer Endowed Dean in Social Work, University of Washington
School of Social Work

FSPEP Staff

Patricia A. White
Executive Director

Holly Delany Cole
Project Manager

With special thanks to the Lois and Samuel Silberman Grant Fund at The New York Community Trust

With special thanks to the Council on Social Work Education for facilitation of the meeting

Coalition For Policy Education and Practice in Social Work

Darlyne Bailey
Association for Community Organization and Social Administration (ACOSA),
Special Commission

Sam Copeland/DuWayne Battle
Association of Baccalaureate Social Work Programs (BPD)

Lakeya Cherry
Network for Social Work Management (NSWM)

Darla Spence Coffey
Council on Social Work Education (CSWE)

Holly Delany Cole
Fund for Social Policy Education and Practice (FSPEP)

Larry Davis
Race, Ethnicity, and Poverty Centers (REAP)

Charles Lewis, Jr.
Congressional Research Institute for Social Work and Policy (CRISP)

Angelo McClain
National Association of Social Workers (NASW)

Yolanda Padilla
Grand Challenges Committee

Sunny Harris Rome
Influencing Social Policy (ISP)

Patricia White
Fund for Social Policy Education and Practice (FSPEP)

Shauntia White
Student Advisory Council

James Herbert Williams
Society for Social Work Research (SSWR)

Luis Zayas/Jacqueline Mondros
National Association of Deans and Directors of Schools of Social Work (NADD)

CSWE Staff

Jessica Holmes
Director, Education Initiatives and Research

Adrienne Walters
Program Associate