



ANNUAL REPORT



2020-2021





Contents

2020–2021 Annual Report Letter

- 3 Letter From the President and the Chair of the Board

Provide Leadership for the Future of Social Work Education

- 4 Strengthening Accreditation and Empowering Programs
- 5 2022 EPAS First Draft Release
- 5 The Council on Field Education Collaborates and Connects
- 6 Enrollment Remains Strong During Pandemic
- 8 *Social Work Responds*
- 9 2020–2021 CSWE Government Relations Highlights
- 9 Leadership and Partnerships

Promote Quality Teaching, Learning, and Scholarship to Prepare Graduates for the Future of Social Work Practice

- 11 2015 EPAS Curricular Guide Resource Series
- 11 Innovations in Specialized Practice Methods
- 12 Preparing Future Social Work Practitioners to Address Substance Use and Misuse
- 13 Open Access Articles From JSWE

Support the Career Development of Students, Faculty Members, and Administrators

- 14 Social Work's National Workforce Initiative
- 14 Social Work HEALS
- 15 CSWE Minority Fellowship Program
- 16 Advancements in International Social Work

Foster a Diverse, Interconnected, and Inclusive Community of Social Work Educators

- 18 Continuing the Legacy of Equity and Social Justice in Social Work
- 18 Supporting Underrepresented Groups, Educators, Students, and Alumni
- 18 CSWE Task Force to Advance Anti-Racism
- 19 Elevating Women and Feminist Perspectives in Social Work
- 20 Center for Diversity and Social & Economic Justice
- 21 Katherine A. Kendall Institute for International Social Work Education

Ensure CSWE Provides Exceptional Value to Our Members and Member Institutions

- 22 2020 APM Goes Virtual
- 24 Who Attended the Virtual APM
- 25 Leading Critical Conversations on YouTube

Membership

- 26 CSWE Donors 2020–2021
- 28 CSWE Governance Structure 2020–2021
- 29 2020–2021 Officers and Board of Directors
- 30 CSWE Staff Organization

Letter From the President and the Chair of the Board

Colleagues,

Thank you for taking the time to review our 2020–2021 Annual Report.

We are so pleased to share these programs, initiatives, and achievements and to celebrate all that we have accomplished from July 2020 through June 2021. We are grateful for the time that members have given to CSWE's Board of Directors, the Commissions and Councils, and our task forces, especially throughout turbulent times in academia.

COVID-19 has claimed more than 650,000 American lives and exacerbated glaring injustices in our society. We know that the impact of structural racism contributed to the disproportionate impact of COVID-19 among traditionally underserved Black and Brown populations. That's why we were thrilled that so many educators wanted to participate in our Task Force to Advance Antiracism in Social Work Education. You'll find updates on the Task Force's activities and many other encouraging updates from across the organization.

While our programs were not immune to the many changes seen in higher education, there were several positive moments. We were pleased to share that enrollment in social work programs

increased during the pandemic while higher education saw a 4.5% decrease in enrollment. This statistic was uncovered thanks to the participation of hundreds of social work programs. We also held the first-ever virtual Annual Program Meeting in November 2020 that connected several hundred attendees to on-demand presentations and live plenary sessions.

There is no way that CSWE could advance excellence in social work education without the help of so many members and volunteer leaders. We thank you for your support for our organization and hope you enjoy the highlights from our past year.

Warm regards,



Darla Spence Coffey, PhD, MSW
CSWE President & CEO



Sandra Starks, EdD, LCSW
CSWE Board Chair

Provide Leadership for the Future of Social Work Education

Strengthening Accreditation and Empowering Programs

In 2020 the Department of Social Work Accreditation (DOSWA) began offering a series of interactive Lunch & Learn webinars to engage with programs on a variety of helpful and popular topics related to social work accreditation. Past webinar topics included orientation to accreditation services, applying for candidacy, and writing an accreditation document. Most recently, on May 19, 2021, the DOSWA team hosted a Lunch & Learn titled “COVID-19: One Year Later.”

Given the impacts COVID-19 has had on institutions and social work programs, the Commission on Accreditation (COA) [provided extensive guidance](#) and flexible options to support the needs and autonomy of social work programs, empowering each to continue delivering responsive, high-quality educational programming unique to their context and community. The “COVID-19: One Year Later” Lunch & Learn provided resources grounded in the importance of the health and safety of students, educators, social workers, and their clients and communities, who continue to navigate the effects of the global pandemic.

The webinar shared the most up-to-date information and accreditation resources and provided insight into the most frequently asked questions as programs plan for the next academic year. A series of common scenarios was shared with participants, and responses were provided in alignment with the COA’s COVID-19 guidance. All information and resources presented in this and previous webinars are publicly available on the [CSWE website](#). We look forward to connecting with you at our next COA Lunch & Learn. Accreditation services are available year-round, so be sure to engage in our many offerings and learning opportunities.

After years of committee work, discussion, planning, and piloting, the COA has granted accreditation to the first post-master’s social work fellowship program. Congratulations to Walter Reed National Military Medical Center’s National Capital Consortium Social Work Fellowship in Child and Family Practice.

Fellowship programs are hosted by sites offering social work services in the United States, its territories, or U.S. military installations and advance the knowledge and skills of social work practitioners in focused areas of practice. Unlike the academic programs accredited by COA, fellowship programs

are practice based and not tied to degree programs in colleges and universities. The purpose of fellowship training is for trainees to obtain advanced competencies and core expertise and skills beyond those attained through completion of a master's degree in social work.

CSWE remains committed to the accreditation of social work fellowship programs and the valuable service they provide to the social work profession. Three other fellowship programs participated in the pilot and are expected to be reviewed by COA for accreditation decisions during the October 2021 or February 2022 meetings. COA and the DOSWA staff thank the Fellowship Review Committee (FRC) for their work and dedication to post-master's social work education. The COA, FRC, and CSWE staff are currently evaluating the pilot findings and capacity to allow additional fellowships to seek accreditation; details and updates can be found [here](#).

2022 EPAS First Draft Release

The CSWE [Commission on Educational Policy \(COEP\)](#) and [COA](#) released the first draft of the [2022 Educational Policy and Accreditation Standards \(EPAS\)](#).

The first draft of the proposed changes for the 2022 educational policy was distributed for public review and comment in fall 2019. The COEP, COA, and 2022 EPAS Joint Committee evaluated the feedback and implemented recommended changes to respond to the changing environment. The full draft developed from this process was released with a feedback survey that outlined the proposed changes and solicited feedback from CSWE

constituents. The feedback survey closed on May 18, 2021, with 564 responses from social work educators, administrators, practitioners, and stakeholders from across the United States. In addition to the feedback survey, COEP and COA presented on the draft and solicited feedback in the following forums:

- CSWE's 2020 Annual Program Meeting
- The Association of Baccalaureate Social Work Program Directors spring 2021 conference
- The National Association of Deans and Directors of Schools of Social Work spring 2021 conference
- CSWE Council on Field Education Town Hall

The feedback from this survey will be incorporated into the second draft of EPAS, which will be released in fall 2021. CSWE is committed to a comprehensive and thorough review process to develop a 2022 EPAS that reflects the excellence of social work education programs.

The Council on Field Education Collaborates and Connects

The Council on Field Education (COFE) collaborated with CSWE leadership, the COA, and the COEP to host three Connect Sessions to collect data on the effects and innovations resulting from the pandemic, racism, and COVID-19 and to receive feedback and answer questions related to 2022 EPAS. These events were held in lieu of the Connect Sessions typically held at CSWE's APM and were well-attended.

2022

Draft #1 — Spring 2021
Educational Policy
and Accreditation
Standards

for Baccalaureate and Master's Social Work Programs

CSWE

COUNCIL ON SOCIAL WORK EDUCATION
Commission on Accreditation
Commission on Educational Policy



The first COFE Connect Session, “The Impact of a Global Pandemic on Field Education,” was held February 18, 2021, and included 297 participants. The second COFE Connect Session, “The Impact of Racism on Field Education,” was held February 24, 2021, and included 253 participants. Our final Connect Session, “Field Education 2022 EPAS Feedback,” focused on the proposed changes in the new draft of the CSWE 2022 EPAS and was held April 22, 2021, with more than 400 field educators around the nation participating.

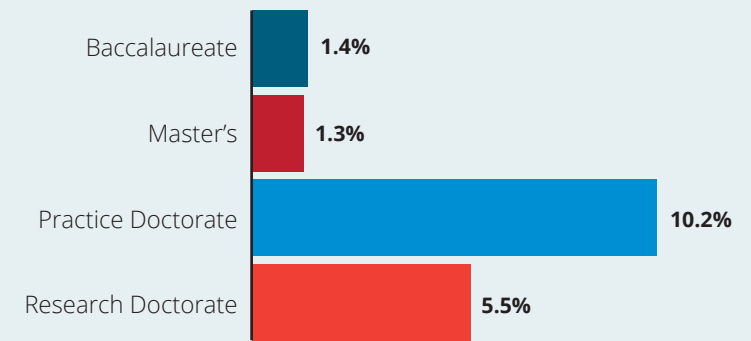
Data collected from these Connect Sessions are being analyzed and will inform or confirm 2022 EPAS proposed changes specific to field education and beyond. Watch the YouTube video for the [Proposed Changes to the 2022 EPAS](#).

Enrollment Remains Strong During Pandemic

From the [Spring 2021 CSWE Member Pulse Survey Results Report](#), preliminary analysis of enrollment data from programs that reported data in both 2019 and 2020 revealed the following:



Enrollment increased for programs at entry level from fall 2019 to fall 2020

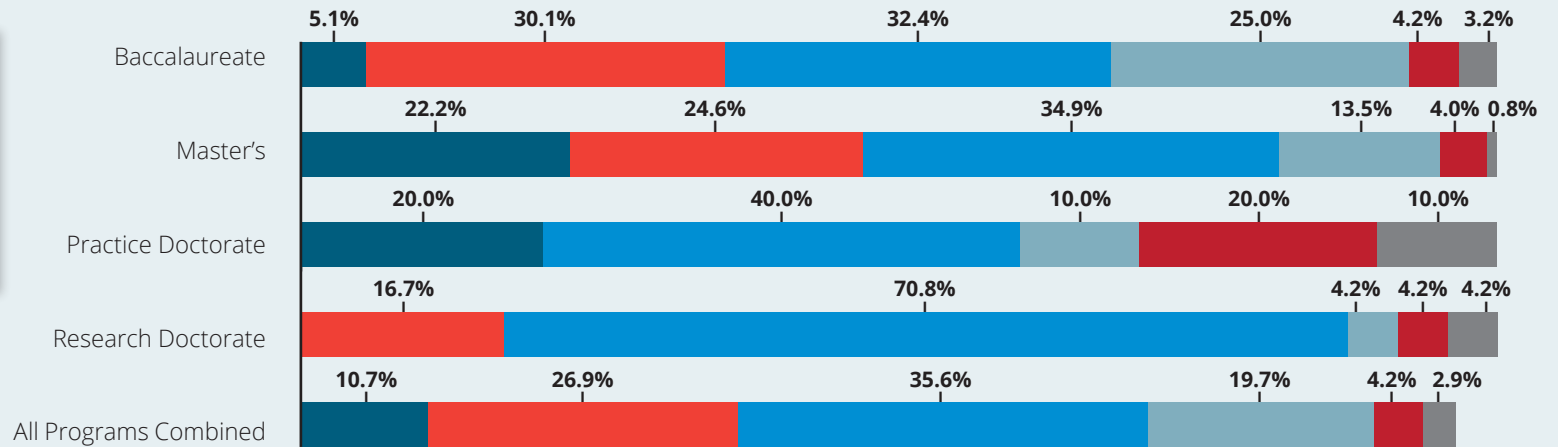


Most programs responding to the survey also said that enrollment from spring 2020 to spring 2021 increased or stayed flat at all program levels:

Percentage of institutions reporting changes in enrollment for spring 2021 compared to spring 2020, by program level

Enrollment has

- increased by over 10%
- increased by 1% to 10%
- remained flat
- declined by 1% to 10%
- declined by 11% to 20%
- declined by over 20%

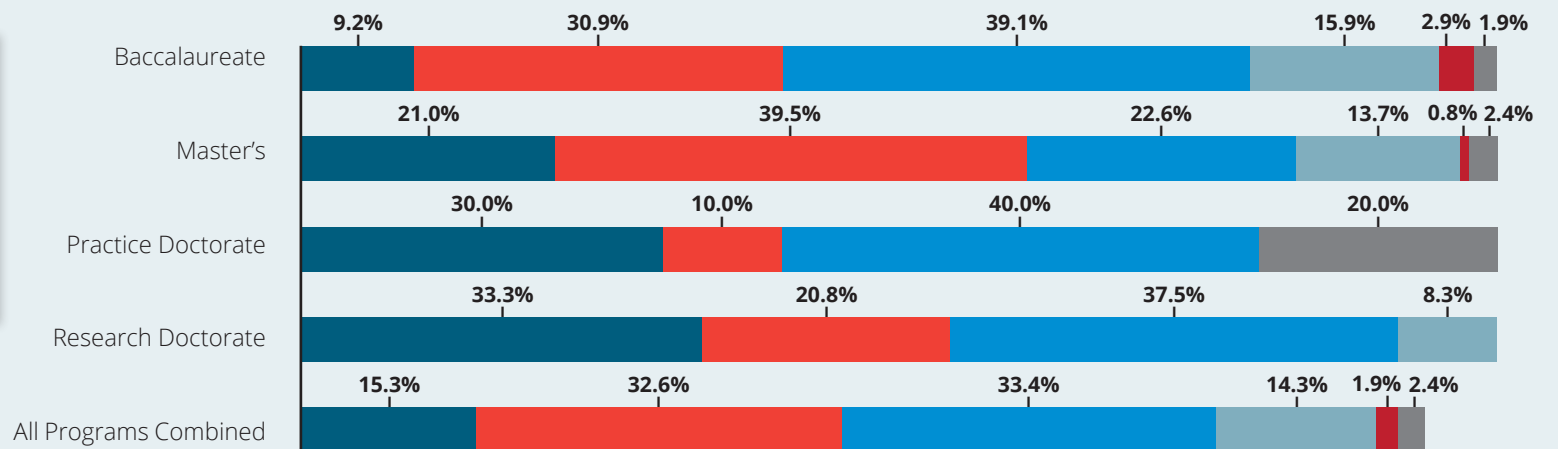


Data also show that applications for fall 2021 are up at most social work programs across the country:

Percentage of institutions indicating applications for fall 2021 by program level

Applications to the program have

- increased by over 10%
- increased by 1% to 10%
- remained flat
- declined by 1% to 10%
- declined by 11% to 20%
- declined by over 20%





2019 Statistics on Social Work Education in the United States

SUMMARY OF THE CSWE ANNUAL SURVEY OF SOCIAL WORK PROGRAMS

The 2019 Annual Statistics on Social Work Education in the United States report includes the most comprehensive and current information on the state of social work education and is used to inform policy decisions, identify issues and trends, and assist in social work education research.

An area of concern from the data is that most respondents said that more students are reporting mental health (63.4%) and financial (56.6%) challenges. A bigger concern is that most respondents said that their faculty and staff are experiencing more mental health challenges (58.1%) but that only 32.1% are reporting these mental health challenges to their supervisors.

The research department completed another data collection effort about the impact of the pandemic through the [Fall 2020 CSWE Member Pulse Survey](#), as the pandemic's impact was just beginning to be felt.

In partnership with the Group for the Advancement of Doctoral Education in Social Work (GADE), the Research Department published a [Report on the Current Landscape of Doctoral Education in Social Work](#) in May 2021. This report paints a picture of practice doctorate and research doctorate programs by highlighting trends in enrollment, degrees conferred, student demographics, program offerings, students' goals for completing the degrees, and more. The data also show a steady increase in the number of practice and research doctorate programs being offered over the last 5 years. The research department also delivered the keynote address at the 2021 GADE Annual Conference along with GADE President Dr. Mo Yee Lee.

- Data collection for the 2020 CSWE Annual Survey took place between December 2020 and March 2021. Additional data were collected on the race/ethnicity and sex of faculty members by tenure-track and non-tenure-track status to better describe the faculty landscape in social work education.
- A contract was signed with SAS Visual Analytics to provide interactive dashboards for member programs

that submitted data to the CSWE Annual Survey. The dashboards will allow members to create their own benchmarking reports compared with aggregates of peer institutions (a minimum of five institutions must have submitted data for the category in order to protect anonymity of institutions) for most data collection points from the Annual Survey.

Social Work Responds



Throughout 2020, CSWE partnered with the Association of Social Work Boards (ASWB) and the National Association of Social Workers (NASW) to produce a newsletter to highlight resources and help support social workers and educators during the pandemic.

Newsletter topics included providing mental health services and social work remotely, completing field work safely, and other topics identified by members.

The 18 *Social Work Responds* newsletters were read by more than 64,700 ASWB, CSWE, and NASW members. Social networks extended the reach and conversation on these topics by reaching more than 300,000 people from March to December 2020. After December, the newsletter became a quarterly publication.

CSWE/GADE Report on the Current Landscape of Doctoral Education in Social Work

CSWE: Ryan Brinkman, Jane Brown
GADE: Mo Yee Lee, The Ohio State University; Elizabeth Lambert, University of Minnesota; Michael LeBlanc, Rutgers University; Cynthia Penning, University of West of England; Ray Park, The Ohio State University

2020–2021 CSWE Government Relations Highlights

Promoting Higher Education

In July 2020 CSWE secured support for the Graduate Assistance in Areas of National Need program at the Department of Education, which is one of the few grant programs that support graduate education, and increased funding for the Minority Fellowship Program (MFP) through the fiscal year 2021 Labor, Health and Human Services, and Education appropriations bill that passed in the U.S. House of Representatives.

Over the winter, CSWE joined several higher education associations in calling for continued suspension of federal student loan payments and collection of defaulted loans and for continuing 0% interest on loans as the United States continued to fight COVID-19. On December 4, the Department of Education announced the extension of the federal student loan administrative forbearance period, the pause in interest accrual, and the suspension of collections activity, a win for students and higher education.

Expanding Support for Social Work Health Care Programs

Throughout this year, CSWE has been a strong advocate for the improvement of health care in communities across the country, because the need to address social determinants of health and health disparities is crucial. CSWE joined several organizations in signing on to a letter supporting a new social determinants of health bill, the Leveraging Integrated Networks Communities to Address Social Needs Act. The bipartisan bill would support a Department of Health and Human Services grant program to establish new or enhance existing community integration network infrastructure.

CSWE also joined several health profession organizations to ensure eligibility for social workers under the new Health Resources and Services Administration (HRSA) Mental Health and Substance Use Disorder Workforce Training Program through advocacy activities on both the congressional and federal agency levels. Through ongoing congressional outreach efforts, CSWE played an important role in securing funding increases for HRSA's Behavioral Health Workforce Education and Training program and the Substance Abuse and Mental Health Services Administration (SAMHSA) MFP in both regular appropriations and COVID-19 relief packages.

Advancing Social Justice and Social Work Research

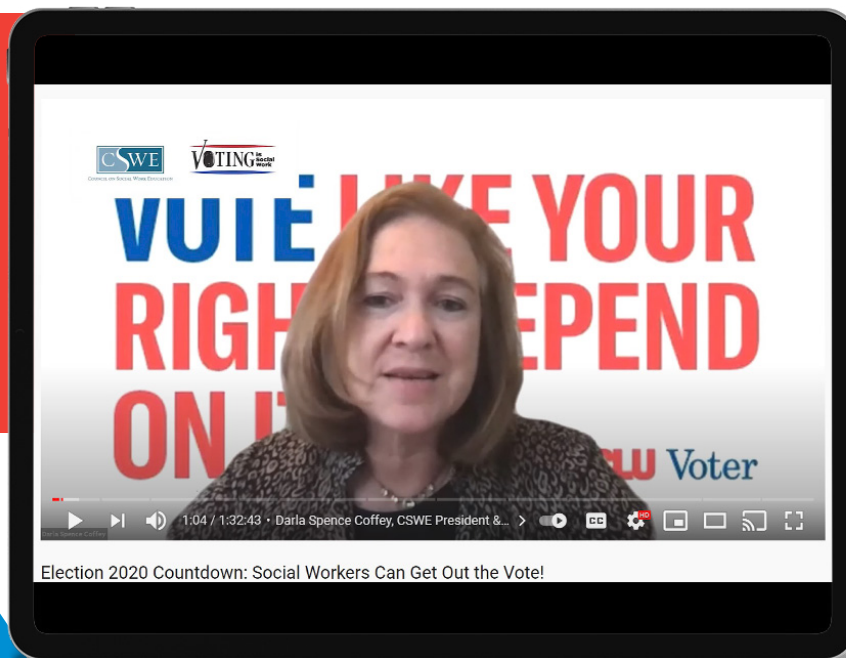
CSWE advocates for social workers in academia and in research to develop an evidence base for effective social service programs to address the complex needs of a diverse population. As part of that effort, CSWE responded to a request for input from the National Institutes of Health inviting comments and suggestions to advance and strengthen racial equity, diversity, and inclusion in biomedical research and advance health disparity and health equity research through their new [UNITE initiative](#). Their response emphasized how essential social work researchers are to advancing these efforts because of their expertise in social and behavioral health, social determinants of health, and translation and community-based research methods. CSWE also provided suggestions to reduce some obstacles to training and careers in biomedical and behavior research that are seen by students of color.

Leadership and Partnerships

The Federation of Associations of Schools of the Health Professions (FASHP) was created in 1968 as a forum for representatives of health profession education associations



Election 2020 Countdown: Social Workers Can Get Out the Vote!



Election 2020 Countdown: Social Workers Can Get Out the Vote!

to encourage effective collaboration between the health professions in education and practice, to prepare health profession education for the future, and to serve as a liaison with other organizations sharing an interest in health profession education. Through its involvement in FASHP, CSWE has worked to strengthen the role of social work as a health profession.

Building Bridges to the Social Work Profession

In March 2020 CSWE hosted an interactive Social Work Leadership Roundtable presentation that focused on improving access to and thriving within the social work profession. [The video is available on CSWE's Facebook page.](#)

Karen Bullock, PhD, professor and head of the School of Social Work at North Carolina State University, and Samuel Bradley, Jr., DSW, assistant professor of macro practice at Boston College School of Social Work, discussed these topics and answered questions from viewers along with moderator Gautam Yadama, PhD, dean of the Boston College School of Social Work.

CSWE is a founding member of the Social Work Leadership Roundtable, which consists of nine social work organizations.

Voting Is Social Work

Throughout 2020, CSWE partnered with the National Social Work Voter Mobilization Campaign to improve voter registration and make it easy for programs, students, and faculty to organize voter registration and empowerment programs.

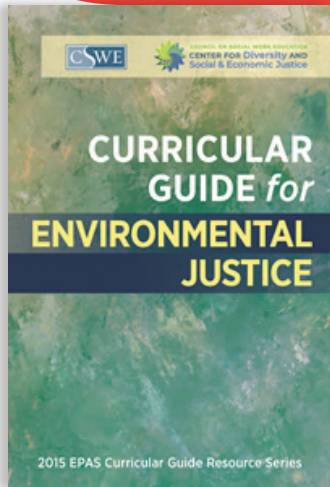
A September webinar, "[Election 2020 Countdown: Social Workers Can Get Out the Vote!](#)" featured voting rights activist Barbara Arnwine, Esq., and educators and field directors from across the country. More than 200 people attended the webinar, and more than 420 people have watched the recording on [CSWE's YouTube channel.](#)

Promote Quality Teaching, Learning, and Scholarship to Prepare Graduates for the Future of Social Work Practice

2015 EPAS Curricular Guide Resource Series

The Department of Educational Initiatives and Research continues to promote high-quality teaching, learning, and scholarship to prepare graduates for the future of social work practice with the addition of the new *Curricular Guide for Environmental Justice* as part of the 2015 EPAS Curricular Guide Resource Series. Curricular guides provide social work educators with practice competencies, exercises, readings, multimedia content, assignments, and more, mapped to the nine EPAS competencies. The guides are developed by national task force members from a variety of social work programs and practice settings.

The *Curricular Guide for Environmental Justice*, released in October 2020, was created with support by the [CSWE Center for Diversity and Social & Economic Justice](#). A task force of more than 60 environmental justice experts convened over the course of a year to extend and improve environmental justice content, specifically generalist environmental justice competencies. Task force members shared the guide during a 2020 APM Connect Session.



Innovations in Specialized Practice Methods

In the last year, the Council on Practice Methods and Specializations (CPMS) fulfilled its charge by responding to issues relevant to the preparation of students in the context of current and emerging social work practice. The CPMS successfully facilitated “Examining the Use of Simulation in Teaching,” a Connect Session for attendees at the virtual APM in November 2020.

Council members David Pooler (former chair), Janice Edwards, Nadine Bean, and Denice Liley presented on how simulation is used to teach specialized practice. The presenters provided an overview of simulation, highlighted current promising practices, and discussed its challenges and opportunities. This topic was an especially critical conversation this year because many field placements closed during the pandemic, and educators needed new and creative ways to teach students the practice skills necessary to be effective social workers.

The CPMS continues to build on the expertise of its members to distribute information that is relevant to



Members of the *Curricular Guide for Environmental Justice* task force



social work educators working to prepare practitioners for the challenges of today's practice environment and will present another critical conversation at the 2021 APM on the changing landscape of social work education due to COVID-19, "Using Technology to Teach Generalist and Advanced Competencies."

Preparing Future Social Work Practitioners to Address Substance Use and Misuse

During Year 2 of the SAMHSA-funded practitioner education grant, Substance Use Disorder Expansion of Practitioner Education in Social Work (Prac-Ed), CSWE welcomed 10 new social work programs to the fold for a total of 32 participating MSW programs since September 2019. The

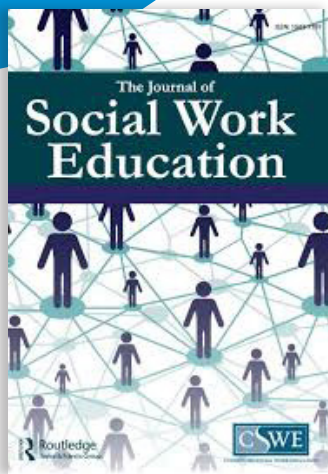
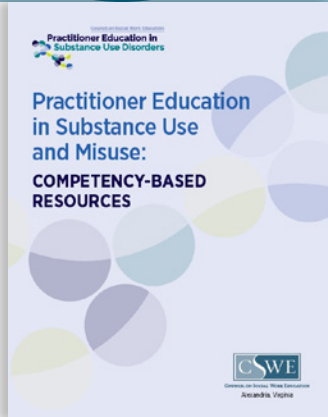
Prac-Ed grant aims to address the lack of a high-quality standardized substance use disorders curriculum in accredited schools and programs of social work.

In May CSWE released a robust collection of competency-based resources that were created and piloted under this grant. The collection includes an extensive array of curriculum, assessment, and field education resources that were created to address the lack of a high-quality standardized curriculum in substance use and misuse. CSWE members may extend and enhance coursework with competency-based curriculum tools, including the curriculum framework and four recorded plug-and-play modules and sample syllabi. The new curriculum aligns with social work competencies in CSWE's 2015 EPAS and

uses CSWE's Specialized Practice Curricular Guide for Substance Use Social Work Practice, partially funded by the American Academy of Addiction Psychiatry, as part of their Opioid Response Network grant.

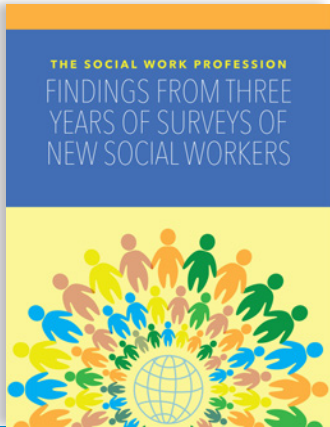
Open Access Articles From JSWE

The Journal of Social Work Education (JSWE) continued to offer open access to articles on racism and social justice topics throughout the year. Collectively, the articles were accessed more than 4,000 times and helped promote the scholarly work of social work educators to students and educators in any field or area of study. The JSWE Editorial Advisory Board helped select the articles for open access.



Northwestern State University of Louisiana, March 2, 2021. This is SOWK 3130: Generalist Practice with Groups class, participating in a group experience facilitated by one of the students. Submitted by Ruth Weinzettle

Support the Career Development of Students, Faculty Members, and Administrators



Social Work's National Workforce Initiative

The CSWE, NASW, and George Washington University Fitzhugh Mullan Institute for Health Workforce Equity released findings from social workers completing their MSW degrees that detail key facts about the social work profession.

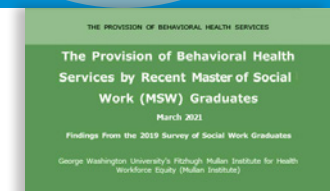
The report, *The Social Work Profession: Findings From Three Years of Surveys of New Social Workers*, presents a comprehensive view of where and how social workers are serving clients and communities across the country. The report provides insights into new social workers' demographic and educational backgrounds, the types of jobs they are taking, the populations they are serving, their experience in the job market, and their satisfaction with their new jobs. The 2019 survey introduced new questions on student educational debt and whether the respondent was a first-generation college graduate. These new questions established that graduates who identified as Black or African American and Hispanic or Latino reported facing higher levels of debt than their White colleagues. These data are central to CSWE's continued efforts to address barriers to the profession through advocacy, communication, and a commitment to antiracism.

The *Provision of Behavioral Health Services by Recent Master of Social Work (MSW) Graduates* data brief from the National Workforce Initiative provides insights into contributions by these new social workers to the behavioral health field. The report highlights findings about MSW graduates who provide behavioral health services, including their primary job focus, demographics, educational and occupational background, job settings, licensing or educational requirements, mean and median income, and age of clients served.

Social Work HEALS

During the 2020–2021 academic year, Social Work Healthcare Education and Leadership Scholars (HEALS) co-led monthly health care social work-themed webinars:

- October: Health (In)Equity
- November: LGBT & Transgender Healthcare
- December: Medical Rationing & Disability Rights
- January: Telehealth Disparities & the Digital Divide
- February: Rural Healthcare
- March: Integrated Behavioral Health

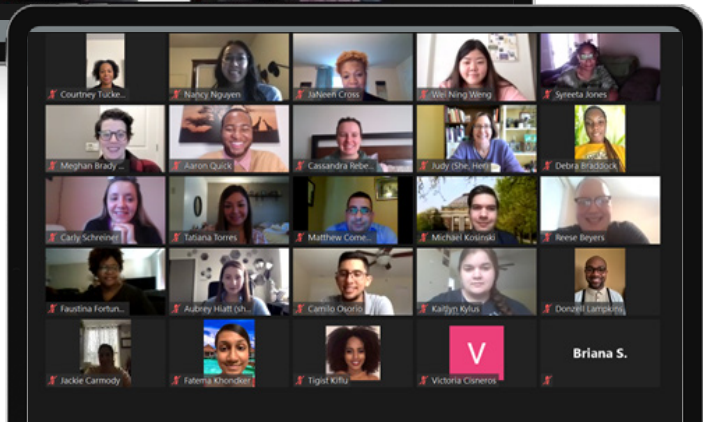




HEALS November Webinar Team and Guest Speaker



HEALS February Webinar Team



HEALS Scholars and Alumni, Policy Summit '21

In November 2020, HEALS staff and alumni co-presented on Expanding Policy Practice in Social Work at the 2020 APM. The work of the program was highlighted as a strong example and case study in the argument to expand policy practice.

In March 2021, HEALS held its final policy summit, which featured social work health care and policy panels, presentations, policy practice trainings, networking opportunities, and policy advocacy sessions.

CSWE Minority Fellowship Program

The CSWE Minority Fellowship Program (MFP) creates space for critical conversations that support students' academic and professional development. During the 2020 APM, the MFP organized an Interdisciplinary Behavioral Health Panel to share expertise with its 26 doctoral and 42 master's fellows, as well as 55 fellows from the Interdisciplinary MFP (IMFP). Through tactful facilitation of the panel discussions and breakout rooms, Crystal Hayes, MSW; Shinichi Daimyo, MPH, MSN, PMHNP-BC, CRNP; and Jonathan Yellowhair, LAC, NCC, applied the concepts of antiracism to mental health



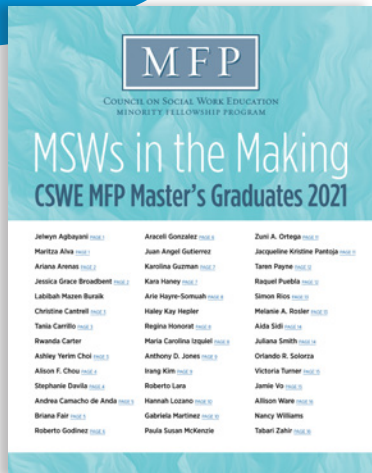
COUNCIL ON SOCIAL WORK EDUCATION MINORITY FELLOWSHIP PROGRAM

and substance use practice. Nearly all the CSWE MFP fellows endorsed the session as providing “useful information for their academic and professional development.”

CSWE MFP’s partnerships with other SAMHSA-funded organizations laid the groundwork for the coordinated event. The SAMHSA-sponsored IMFP is hosted by the American Psychological Association, with CSWE as an active partner along with the American Nurses Association; the National Board of Certified Counselors; NAADAC, The Association for Addiction Professionals, along with support from the American Association for Marriage and Family Therapy. Thirteen master’s and doctoral fellows represent CSWE member programs among the 55 IMFP fellows in the inaugural cohort, who are committed to reducing health disparities in minority communities in the United States by filling the workforce gaps among mental health professionals skilled in interdisciplinary practice.

The interdisciplinary panel at APM represents a snapshot of the CSWE MFP’s commitment to advancing social work students’ careers. To promote the expertise, experience, and career ambitions of our graduating fellows, the MFP team developed the *MFP Doctoral CV Booklet* and the *MSWs in the Making: CSWE MFP Master’s Graduates* viewbook.

Working in concert with the Division of Communications and Marketing CSWE developed a social media toolkit to support fellows in leveraging their own networks to circulate these materials beyond CSWE’s channels. As a result, the Master’s MFP Web page has garnered 346 views since the viewbook’s announcement on May 13, 2021. Efforts to help



transition doctoral and master’s fellows to their postdegree careers rely on extensive collaboration within CSWE and with outside stakeholders. These efforts are pivotal for the CSWE MFP to continue to address the workforce needs for underserved communities experiencing mental health and substance use challenges.

Advancements in International Social Work

The *International Social Work Leader Review* provides quarterly recognition for leaders with ties to the United States who are also international social work educators or leaders. This year, two international leaders, Irena Sendler and Winnie Mandela, were highlighted with a brief description and bibliography, which can be used in the classroom. They can be accessed on CSWE’s *Katherine A. Kendall Institute for International Social Work Education* website.

- Presentation at the Connect Session: On November 19, 2020, the Global Commission presented on the Global Commission’s Infusion of Diversity, Equity, & Inclusion With Critical International Perspectives.
- The Hokenstad International Lecture: Each year a prominent international social worker is nominated to present during the CSWE’s APM. These nominees are generally not U.S. based. This past year the committee selected Dr. Cindy Blackstock, a leader of social work education and practice, who delivered the Hokenstad International Lecture on “Colonialism in 2020: Seeking Equity for Nations Within the Nations.”
- The Global Commissions Fulbright Initiative: This initiative is a collaboration between the Katherine A. Kendall

Institute for International Social Work Education and the Commission on Global Social Work Education, led by Carol Cohen and the commission.

- Partners in International Education Award: The PIE Awards are given in recognition of conceptual, curricular, and programmatic innovations in education for international social work.
- The 2020 Individual award was presented to Martha S. Bragin, MSW, PhD, Silberman School of Social Work at Hunter College, City University of New York.

- The 2020 Organization award was presented to the California State University, Fullerton, Department of Social Work/Universidad Tecnológica de Chile (INACAP) CSUF/INACAP Service-Learning Program.
- The 2020 Student Award was presented to Julie Wright, California State University, Fresno, School of Social Work.

February 23, 2019: In celebration of Black History Month, members of the Mount St. Joseph University Social Work Club visited The National Underground Railroad Freedom Center in Cincinnati, Ohio. Students learned about the role their local communities played in the underground railroad, historical and current impacts of racism, and the types of human trafficking that occur today. Submitted by Jennifer Withrow



Foster a Diverse, Interconnected, and Inclusive Community of Social Work Educators

Continuing the Legacy of Equity and Social Justice in Social Work

The [Commission for Diversity and Social & Economic Justice](#) selected Dr. Dexter Voisin as the 2020 Carl A. Scott Memorial Lecturer at the 2020 APM. Dr. Voisin's lecture, titled "[America the Beautiful and Violent: The Role of Social Work in Addressing Anti-Black Racism](#)," was given on

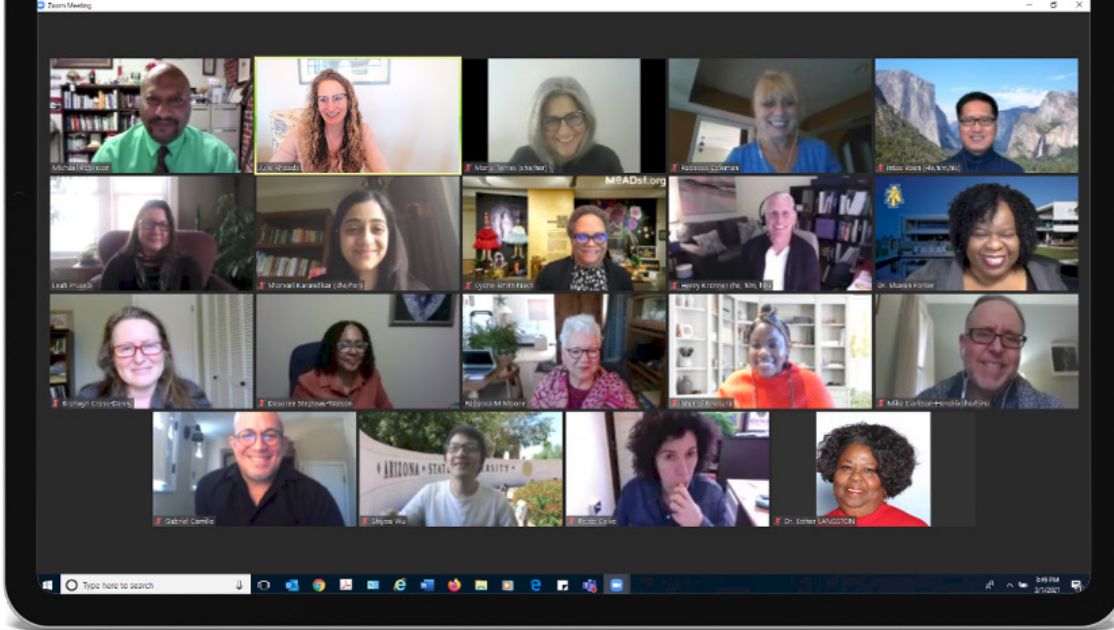


November 16. In his lecture, Dr. Voisin explored how in its mission to address inequality, social work uses methods of colonization. He explored how to move from performative to transformative methods to address anti-Black racism in social work.

Additionally, the commission presented the second annual Community Action Partnership Awards. The 2021 Program Award went to the Center for Innovation in Behavioral Health Education & Research at Simmons University School of Social Work; and Sujeeta Elizabeth Menon, University of Houston, was presented with the 2021 Student Award.

Supporting Underrepresented Groups, Educators, Students, and Alumni

With the strong support and engagement of all [Council on Racial, Ethnic, and Cultural Diversity \(CRECD\)](#) councilors, we were able to meet several goals in service of our mission to initiate new activities and programs related to historically underrepresented groups in social work education and to disseminate and promote research about members of



Commission for Diversity and Social & Economic Justice meeting

historically and emerging underrepresented groups to be used by educators, students, and alumni.

This work included the development of a Connect session for APM titled “Antiracism: Learning From Social Work’s History and Planning for the Future,” awarding of two CRECD awards for scholars focused on issues salient to our mission (one for a doctoral student and another for junior faculty), and continued development of our ongoing Legacy Research projects. One focused on the experiences of students of color and one focused on the faculty experience.

CSWE Task Force to Advance Anti-Racism

CSWE Task Force to Advance Anti-Racism’s charge is to develop an action plan to make social work education

stronger by adopting antiracism pedagogies and establishing antiracist learning environments. In January 2021, the task force compiled a 15-page list of recommendations provided by social work faculty and staff who participated in workgroups throughout fall 2020.

The task force members are currently working to organize and condense more than 150 distinct recommendations into clear guidance for social work education to become actively antiracist.

The task force is organized into four workgroups whose members include faculty and students from a wide range of social work programs across the United States focused on the following topics:

- Curriculum
- Faculty, student, and program equity
- Educational policy and accreditation standards
- Conferences and faculty development

“We want to update faculty, administrators, and students on the great work being done by our task force as we develop an action plan based on the workgroup recommendations. These volunteers have been hard at work, identifying and investigating dozens of ways that social work education can best prepare students to dismantle racism in their practice,” said CSWE President and CEO Darla Spence Coffey, PhD, MSW. The initial recommendations from the workgroups were shared at the CSWE Membership Meeting at the virtual 2020 APM in November 2020 and are available on [CSWE’s YouTube channel](#).

Elevating Women and Feminist Perspectives in Social Work

Despite the disruptions caused by the global pandemic and the sadness and frustrations brought on by racial injustice, the Council on the Role and Status of Women in Social Work Education (Women's Council) had a productive 2020–2021 year:

- Five new council members were welcomed with a virtual orientation.
- Individual members spent the summer recording interviews with the [Women's Council Award winners](#).
- 2020 Council Award recipients honored at the fall meeting.
- Presented on managing stress and mentoring others during the pandemic at the virtual APM Connect Session.
- The [Women's Council Charge](#) was revised and approved.
- The [Feminist Manuscript Award](#) was created, which was also accepted by the Commission for Diversity and Social & Economic Justice and the CSWE Board.

Educator | Resource
OF THE MONTH



Book recommendations by the Center for Diversity and Social & Economic Justice Educator | Resource of the Month, highlighting narratives by and about Asians and Asian Americans.

Center for Diversity and Social & Economic Justice

The [Center for Diversity and Social & Economic Justice](#) successfully produced rich teaching resources, available on its website through its [Educator | Resource of the Month](#). Educators were provided with pedagogical tools to help lead critical conversations concerning the Asian American experience, environmental justice, ways to create racially equitable learning environments, and research methods for racial equity and cultural responsiveness, among others. More than 2,500 people opened the [Educator | Resource](#) newsletter for May, which featured narratives by and about Asians and Asian Americans.

Katherine A. Kendall Institute for International Social Work Education

The [Center for Diversity and Social & Economic Justice](#) and the [Katherine A. Kendall Institute for International Social Work Education](#) (Kendall Institute) are collaborating on a Web-based curriculum that will bring international readings and companion multimedia resources into social work courses. Working with Words Without Borders, which makes contemporary international literature from across the world accessible to students and educators, they intend to increase the ability of future social work students to engage in critical conversations on global and intercultural levels. This collaboration was spotlighted as the [February 2021 Educator | Resource](#).

In June 2020, the Kendall Institute Advisory Board launched its Fulbright Initiative in collaboration with the Global Commission to encourage social work participation in the Fulbright Program.



Kendall Institute Advisory Board virtual meeting



KENDALL INSTITUTE
Katherine A. Kendall Institute for
International Social Work Education

Ensure CSWE Provides Exceptional Value to Our Members and Member Institutions

Leading
Critical Conversations 2020
**DIVERSITY,
EQUITY,
& INCLUSION**

CSWE 66th Annual
Program Meeting
November 16-20, 2020

Join the virtual meeting!



2020 APM Goes Virtual

The 2020 APM was the first to be held virtually. It highlighted one of the most important events at the APM: educational sessions. Educational sessions make up a crucial portion of the APM as social work educators, both nationally and globally, gather to publicize their scholarly findings and innovations. The APM theme was “Critical Conversations: Diversity, Equity, and Inclusion,” which allowed a lot of creativity among the more than 1,600 proposals submitted.

The Council on Conferences and Faculty Development (CCFD) collaborated with CSWE to come up with the 2021 APM theme and presenter responsibility policies, and they are continuing the work to ensure that diversity, equity, and inclusion (DEI) is promoted in every aspect of the conference, review processes, and other current structures that may hinder the advancement of DEI.

The Council on Conferences and Faculty Development (CCFD) is the volunteer body responsible for policy-setting related to the APM and other faculty development programs at CSWE. CSWE thanks the CCFD for their dedication, support, and guidance in planning our first virtual APM!

Donna M. Aguiniga
Associate Professor,
University of Alaska, Anchorage

Kathryn Brzozowski
Assistant Professor,
Stockton University

Bianca Harper
Clinical Associate Professor,
University of Southern California

Peter A. Kindle
Associate Professor,
University of South Dakota

Alhassan Mustapha
Assistant Professor,
Clark Atlanta University

Nicole Nicotera
Professor, University of Denver

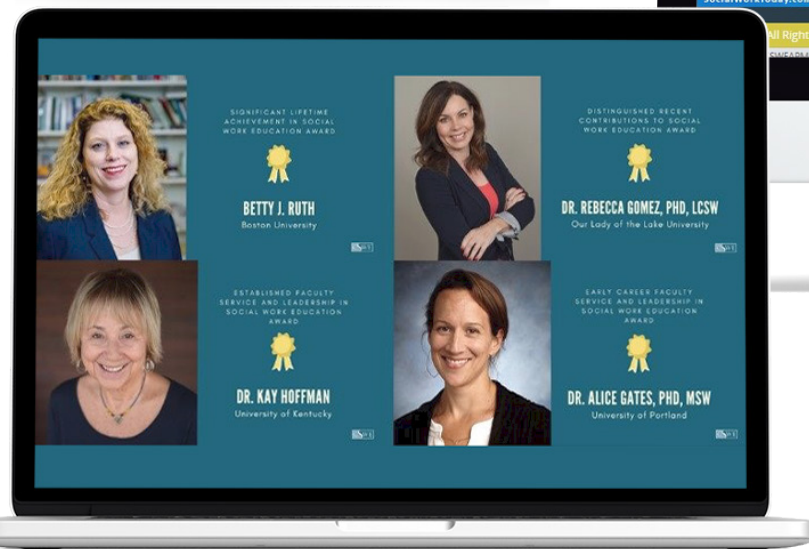
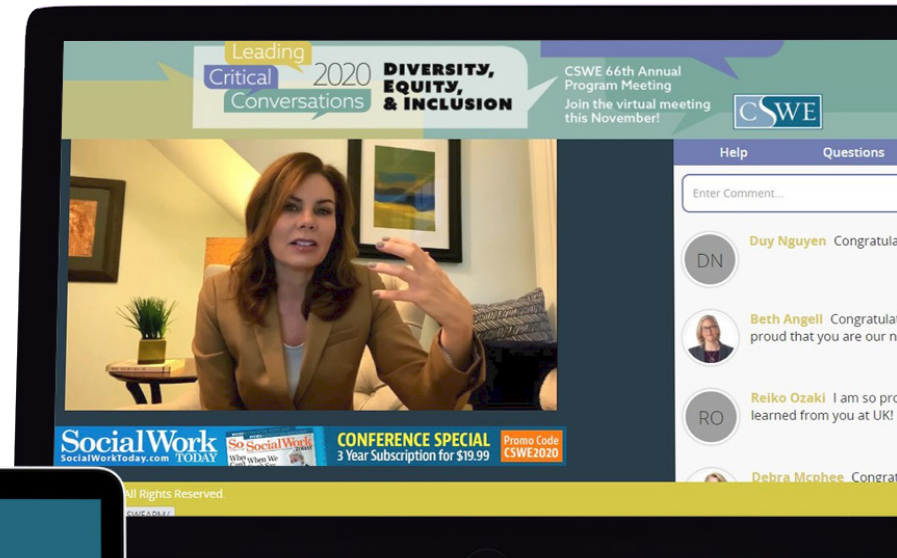
Kathi R. Trawver
Associate Professor,
University of Alaska,
Anchorage

The Virtual 2020 APM at a Glance

There were more than **800** educational sessions, by a total of **2,173** presenters.

Of those sessions, **424** were paper presentations, **294** were interactive posters (ePosters), **199** were interactive workshops, and **73** were panels.

The 2020 APM also had a new scheduling format. The conference is usually held over **3 DAYS**, however, last year the conference was held over **5 DAYS** to spread out content.



Sixty live sessions aired during the virtual APM, and the recordings were added to a library of more than 600 on-demand sessions that debuted during the event.

Total
2,056

Who Attended the Virtual APM

890
43.29%

**Faculty/
Administrator**
(Member)

7
0.34%

**Higher Education
Librarian**
(Nonmember)

143
6.96%

Doctoral Student
(Nonmember)

14
0.68%

Emeritus
(Member)

502
24.42%

Nonmember

130
6.32%

**Undergraduate/
Graduate Student**
(Nonmember)

14
0.68%

**Undergraduate/
Graduate**
(Member)

52
2.53%

**Social Work
Practitioner**
(Nonmember)

97
4.72%

Individual
(Member)

135
6.57%

Doctoral Student
(Member)

31
1.51%

**Practitioner/
Academician**
(Nonmember)

41
1.99%

CSWE Staff



CSWE Spark allowed virtual APM attendees to continue their discussions and networking.

Celebrating the Class of 2021— Students and Educators!

CSWE Board Chair Sandra Starks, EdD, LCSW, congratulated faculty and graduating students for persevering through their academic year during the COVID-19 pandemic. “Students, faculty, and administrators, please feel acknowledged, appreciated, and valued. Your dedication and resilience has made this moment possible and I am so proud of the work you have done this year,” she said.

Leading Critical Conversations on YouTube

CSWE continued the theme of Leading Critical Conversations with a series of YouTube videos released for members and all social workers in spring 2021. The videos have been watched more than 2,000 times collectively, and CSWE plans to continue the series throughout 2021 and 2022.

Iris Carlton-LaNey, PhD, MSW, professor emeritus at University of North Carolina Chapel Hill School of Social Work and social welfare historian, and Tanya Smith Brice, PhD, MSW, CSWE vice president of education, discuss notable Black leaders who dedicated their efforts to improving the quality of life for others.

Yoosun Park, PhD, MSW, associate professor at Smith College School for Social Work, discusses her scholarship on the role of social work and the YWCA during the forced incarceration and relocation of more than 120,000 Japanese Americans during World War II. The YWCA's progressive vision and vocal activism for racial equality was nevertheless bound within

the fundamentally racist belief that being Japanese and being American were mutually exclusive.

Killian Kinney, PhD, MSW, and Richard Brandon-Friedman, PhD, discuss findings from the 2020 Sexual Orientation and Gender Identity and Expression Award-winning paper "Sexual Identity Development and Sexual Well-Being: Differences Between Sexual Minority and Non-Sexual Minority Former Foster Youth." Dr. Brandon-Friedman provides suggestions for social work educators to incorporate the findings in their classrooms and touches on the role of social workers in helping LGBTQ+ youths with their sexual identity development, gender identity development, and sexual well-being.



Membership

Membership
at a Glance

1,834

Total as of
March 31, 2021

1,334

Full: Faculty and
Administration

218

Full: Individuals

62

Students

177

Doctoral Students

43

Emeritus

0

Associate
Organization

CSWE Donors 2020–2021

Pewter

Less than \$24.99

John W. Miller
Kristi Lohmeier Law
Toya Hauf
Mark S. Homan
Sarah A. Candelaria
Rosemary A. Barbera
Lihua Huang
Urania E. Glassman

Copper

\$25.00–\$49.99

Anna R. McPhatter
Carol Bakke
Esther Jones Langston
Gwenelle S. O'Neal
Halaevalu F. O. Vakalahi
Julie Gravelle
Kassandra Murphy-Brazill
Luella Loudenback
Megan Harrison Morrissey
Rachel Baker
Ruben Quintana
William Schwarz
Dorlisa J. Minnick

Bronze

\$50.00–\$99.99

Jane E. Middleton
Jo Ann R. Regan
Julie Bach
Michele A. Rountree
Priscilla Kennedy
Marta A. Mercado-Sierra
Martha S. Bragin

Silver

\$100.00–\$499.00

Herman F. Curiel
Jenny L. Jones
Kelly B. Martin
Leslie Hasche
Rebecca T. Davis
Cudore L. Snell
Barbara W. Shank
Darla Spence Coffey

CSWE Governance Structure

As of June 2021



¹ Bylaws specified.

² Commission Chair serves as ex-officio nonvoting member of the Board of Directors.

2020–2021 Officers and Board of Directors

OFFICERS

CHAIR

Sandra H. Starks

Western Kentucky University

CHAIR-ELECT

Hilary N. Weaver

State University of New York
University at Buffalo

VICE CHAIR/SECRETARY

Halaevalu F. O. Vakalahi

Hawai'i Pacific University

TREASURER

Susan Carol Mapp

Elizabethtown College

BOARD MEMBERS

Monique Apple Oglala

Lakota College

Joan Blakey

Tulane University

Darla Spence Coffey*

President, Council on
Social Work Education

Shirley Gatenio-Gabel

Fordham University

Makeba Thomas Green

Bowie State University

Jenny L. Jones

Clark Atlanta University

April Jones

Tuskegee University

Debra Lavender-Bratcher

Texas Tech University

Mavis Major

Renown Regional Medical Center

Lori Messinger

University of North Carolina
at Wilmington

Shari E. Miller*

University of Georgia

Deana F. Morrow*

West Virginia University

Anthony Patrick Natale*

University of Oklahoma

Michael Allen Robinson*

University of Georgia

Vanessa Robinson-Dooley

Kennesaw State University

Shannon L. Rudisill

Early Childhood Funders Collaborative

Patricia Saleeby

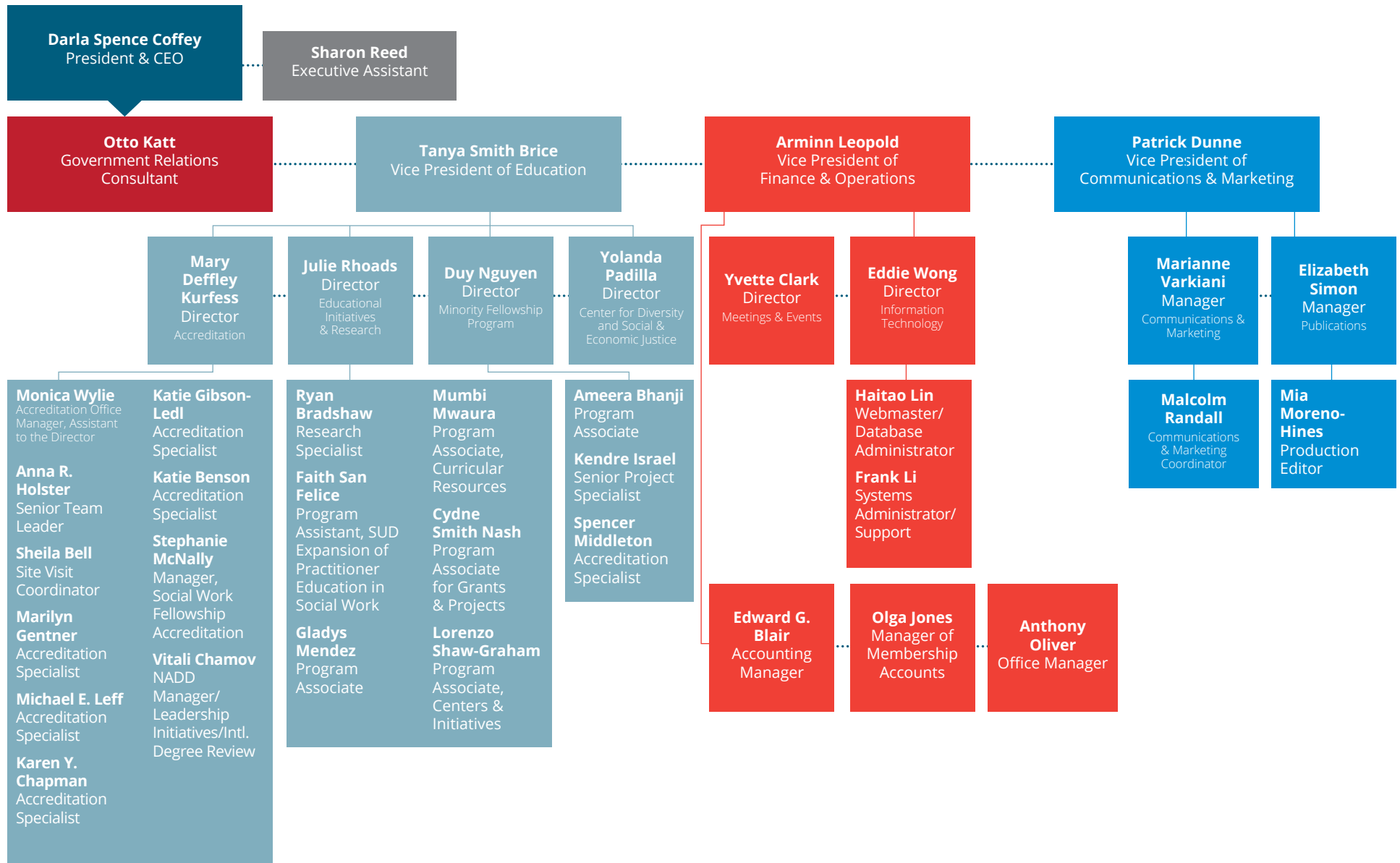
Bradley University

Rebecca L. Thomas*

University of Connecticut

* Ex-officio nonvoting members

CSWE Staff Organization





COUNCIL ON SOCIAL WORK EDUCATION

Council on Social Work Education

333 John Carlyle Street, Suite 400
Alexandria, VA 22314

PHONE: +1.703.683.8080

FAX: +1.703.683.8099

Email: info@cswe.org

www.cswe.org

For the latest news and initiatives at CSWE visit our website at www.cswe.org. There you can find information about accreditation, publications, special projects and initiatives, the Annual Program Meeting and other conferences, and membership.

Copyright © 2021
Council on Social
Work Education